



ALOHA COMMUNITY LIBRARY ASSOCIATION

2018

ANNUAL REPORT



Aloha Community Library Association

2018 ANNUAL REPORT

TABLE OF CONTENTS

Mission & Vision.....	1
ACLA Board of Directors & Library Staff.....	2
Connect.....	3
Engage.....	4
Momentum.....	6
Financial Highlights.....	8
Support.....	10
Testimonials.....	12
Our Commitment.....	13



Washington County
Cooperative Library Services

MISSION

The mission of the Aloha Community Library Association is to grow and support a library that serves as a gateway to lifelong learning and enrichment for our community, bringing people, information and ideas together.

VISION

We strive to provide open access to informational, technological, and cultural resources through a broad spectrum of services, material, and programming.



A summer library program in August filled the new Community Room to capacity for the first time shortly after opening.

ACLA BOARD OF DIRECTORS

Ellen Mickanin, President
Jean Doane, Vice President
Eric Nickerson, Treasurer
Daniel Hauser, Secretary
Melanie Belles
Cassie Roberts
Sam Sheikh
Shannon Wilson

LIBRARY STAFF

Terri Palmer, Library Director
Jesse Castellanos, Assistant Library Director
Karen Turiano, Administrative Specialist
Jared Short, Adult Services Coordinator
Library Assistants: Maggie Hannahs, Katie Patterson
Circulation Assistants: Alexander Edwards, Liz
O'Donnell, Piper Rucker, John Forshew, Lesly Sanocki,
Tammy Czelder, Sean Simonet
Justin Castellanos, IT Specialist

CONNECT

Seven years ago, the library was just a glimmer of an idea. After six years of operations, the library clearly makes a difference in the lives of our neighbors each day. Our 14 employees and over 40 volunteers work together to link people to resources and opportunities for personal growth.



JULY 1, 2017-JUNE 30, 2018

2,462 hours open to the public

65,022 library visits

9,275 computer sessions using a library computer

6,685 Wifi sessions

149,005 books, movies, and audiobooks circulated

6,221 electronic materials borrowed by registered patrons of Aloha Community Library

3,528 new items added to the collection for a total of
21,275 books, movies, and audiobooks

ENGAGE

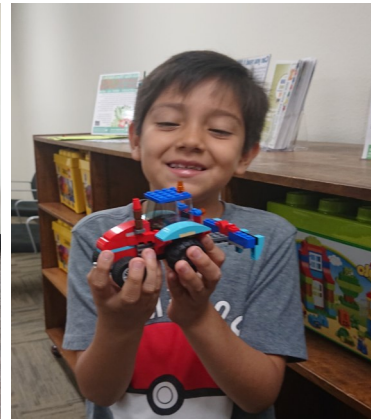
Aloha Community Library strives to provide a warm, welcoming, safe space for all to engage. Involvement comes in all varieties: through volunteer work, attending programs, or dropping off your ballot during an election.



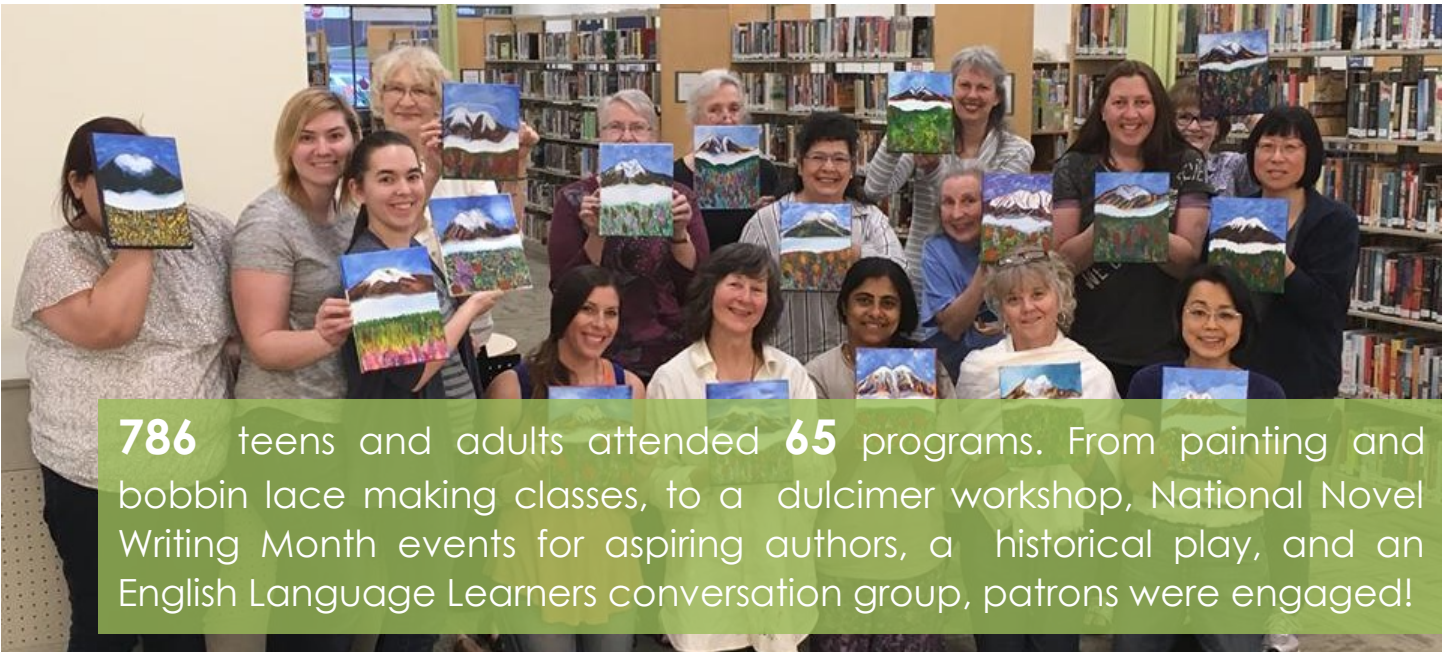
More than **40** adult and teen volunteers donated **3,730 hours** to check in and shelve materials, provide technology assistance, sort and sell donated books, plan and provide programs, serve on the board of directors and committees, and more. Contributed volunteer time is valued at over **\$65,200** in the 2017-2018 fiscal year alone, based on average hourly wages of library staff.



All are welcome.



We provided **148** children's programs attended by **2,716** children and accompanying adults including weekly storytimes, Lego Free Play, STEM Lab, Traveling Lantern Theatre Company, educational presentations by the Museum of Natural and Cultural History and THPRD Nature Mobile, and a variety of performances by children's musicians and entertainers throughout the summer.



786 teens and adults attended **65** programs. From painting and bobbin lace making classes, to a dulcimer workshop, National Novel Writing Month events for aspiring authors, a historical play, and an English Language Learners conversation group, patrons were engaged!

MOMENTUM

2018 marked the second year that the Aloha Community Library has been a member of the Washington County Cooperative Library Services, a year of many changes and growth. From harnessing the full potential of our new Community Room, to increasing outreach to our neighbors, to ensuring that our library reflects our community, our momentum is building.



Our brand new **Community Room** is open for business – a place to gather, learn, and play. This is also an opportunity for the library to take the lead and build community ties by providing meeting space for local nonprofit and government groups, which will be available by reservation in spring of 2019.



New space allows for new programs for all ages – Messy Arts & Crafts for kids, a documentary film series, adult Lego Free Play, financial skill building classes, Spanish language storytime, and much more.

Our increasingly diverse community is a tremendous resource. We will increase outreach and forge partnerships with schools, organizations, and individuals to create a strategic plan that is inclusive, responsive, and inspires community building.

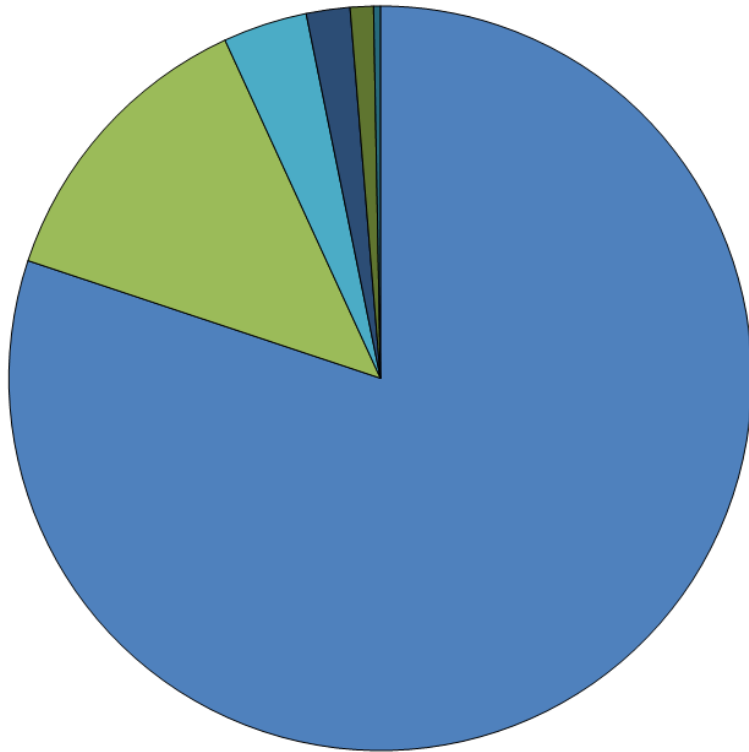
Our focus on sharing our good fortune with our neighbors will continue through our winter clothing drive, food drive to support the Aloha Church of God food pantry, and scheduling programs and tabling opportunities to showcase local organizations.

FINANCIAL HIGHLIGHTS

ACLA's commitment to financial responsibility is strong. Our accounts, policies, and procedures are reviewed annually by an independent financial organization. In 2018 the Board of Directors established a Finance Committee to provide guidance, assist with the budget process, and make informed recommendations to the board.

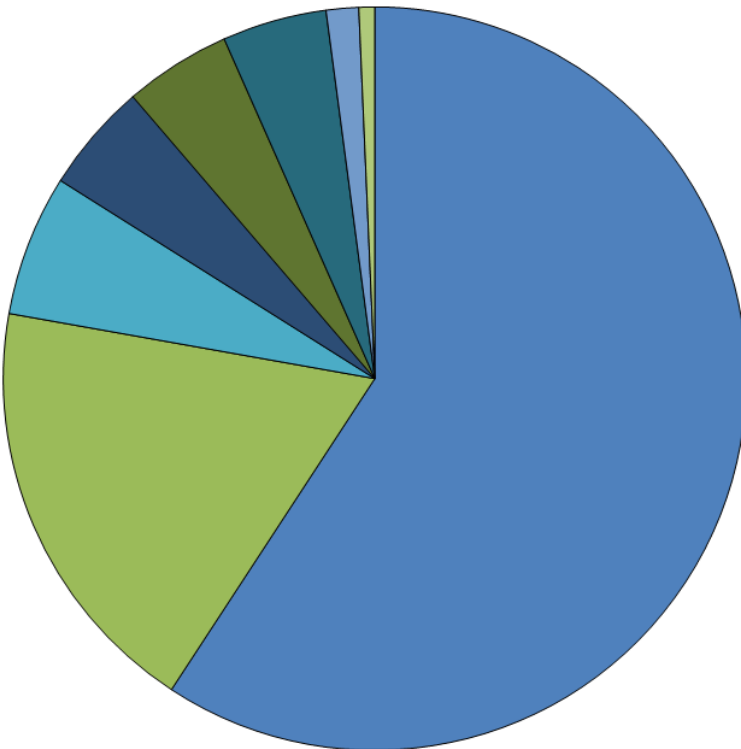
YEAR TO YEAR COMPARISON		
	2018	2017
Revenue and Support		
WCCLS funding	\$467,190	\$455,055
Grants	\$5,901	\$64,538
Donations	\$75,891	\$65,718
Book sales	\$21,361	\$14,770
Fines, fees + other sales	\$12,130	\$7,265
TOTAL REVENUE AND SUPPORT	\$582,473	\$607,346
Expenses		
Staffing	\$309,781	\$213,093
Facilities	\$121,511	\$92,910
Library operations	\$7,379	\$6,357
Library programs + collection	\$28,509	\$27,052
General expenses	\$55,923	\$38,363
TOTAL EXPENSES	\$523,103	\$377,775
Change in Net Assets	\$59,370	\$229,571

REVENUES: \$583,137



- WCCLS Funding \$467,190
- Donations & In-Kind Gifts \$75,891
- Book Sales \$21,361
- Fines, Fees, & Other \$11,075
- Grants \$5,901
- Memberships \$1,719


EXPENSES: \$523,103



- Wages & Benefits \$309,781
- Building Lease \$97,226
- Depreciation \$32,125
- Library Collection \$24,919
- Facilities \$24,285
- General Expenses \$23,798
- Library Operations \$7,379
- Library Programs \$3,590

SUPPORT

Your gifts of financial support and volunteer time are vital. We invest your donations of money and time to provide programs and collections that prepare preschoolers to read, engage kids and teens through exploration and discovery, and inspire adults to build a better world through continuing education and participation in community discussion.



GIFTS OF MONEY

IN THE LIBRARY	cash, check, or credit card
ONLINE	alohalibrary.org/donate
BY MAIL	make checks payable to ACLA PO Box 6561 Aloha, OR 97007

GIFTS OF TIME

Contact Terri Palmer at volunteer@alohalibrary.org or visit alohalibrary.org/volunteer for current opportunities.



OTHER WAYS TO HELP

Donate used books. The majority of donated books are sold online or at in-person sales. Books in good condition are appreciated.

Link your **Fred Meyer Rewards Card** to the Aloha Community Library Association. Visit fredmeyer.com, then use ACLA's account number (RE352) to link your account to ACLA. ACLA earns donations as you use your card.

Register with **AmazonSmile.com**. Just login to your Amazon account through smile.amazon.com, shop all you want, and help ACLA earn donations.

Purchase used books from our online sales collection on amazon.com. Search for **"Aloha Community Library Friends"** to peruse the selection.

Make an impact on your next birthday. Ask your friends to donate to ACLA through a **Facebook birthday party** post. Select "Aloha Community Library Association" as the recipient of your fundraiser, set the dates, add a title and description, then let Facebook and your friends take over.

When using a local **BottleDrop Redemption Center**, choose to donate your bottle and can return profits to the Aloha Community Library. Visit bottledropcenters.com for details.

TESTIMONIALS

This feels more like a community gathering place than just a library. Upon entering you may see a child reading to a dog or someone learning how to use the computer. Passed the wonderful collection of books and movies you may see a diverse group of people knitting next to kids digging through a pile of Lego. The supportive and helpful staff foster community and a love of learning beautifully.



Art Class was wonderful... great children's reading programs and great books!

Great Summer Programs and excellent customer service.



The library may be small (for now; it's growing!) but the staff are some of the nicest and friendliest around. This summer they've had some amazing activities for kids of all ages, and they have story time and programs all year long. Another reviewer mentioned that the Aloha Library is more like a community than a library, and I absolutely agree.

OUR COMMITMENT

The Aloha Community Library Association commits to continuing to listen to, and learn from, our community. We will respond to the needs and wishes of our neighbors to the best of our abilities.



We want to hear from you! Contact info@alohalibrary.org with questions and ideas.

Thank you for your support.

Terri Palmer, Library Director



Aloha Community Library Association

PO Box 6561, Aloha, OR 97007

The Aloha Community Library Association is a 501(c)(3) non-profit organization that supports public library services through the Aloha Community Library. We are a proud member of the Washington County Cooperative Library Services.

ALOHA COMMUNITY LIBRARY

17455 SW Farmington Rd. Ste. 26A
Aloha, OR 97078
(503) 259-0185

Website: alohalibrary.org

Email: info@alohalibrary.org

Facebook: facebook.com/alohalibrary

LIBRARY HOURS

Monday-Wednesday 10am-8pm

Thursday-Friday: 12-6pm

Saturday: 10am-5pm

Sunday: Closed